

PRESENTATION ON NW MEGA AND SMART CITY



NORTH WEST HOUSING CORPORATION SMART/ MEGA CITY PROJECTS



WHO ARE WE

- ❑ NWHC a Schedule 3 Part C, State-owned entity.
- ❑ Whose mandate is to fulfil a specific economic and social responsibility of government.
- ❑ It is sustained by a grant from the Shareholder.
- ❑ It has the capacity to generate own income through rental and outright sale of properties and the development of mixed-housing human settlements.

BACKGROUND: MEGA-SMART CITIES

- ❑ The 6th Administration took a stance to accelerate service delivery.
- ❑ Smart Cities were initially mooted by the State President, His Excellency MC Ramaphosa in 2020 , envisioning a truly Truly Post Apartheid city that would rise to the challenges of apartheid spatial planning.
- ❑ Subsequently, Premier KB Maape also pronounced on it in his SOPA, emphasizing the Development of Critical Mega Infrastructure Projects.
- ❑ The Board of the NWHC also approved the development of Mega-Smart Cities.

BACKGROUND.....contnd

- ❑ NWHC is currently involved in the development Mega and Smart Cities projects.
- ❑ Expert Panel from the Office of the Premier evaluated all infrastructure projects including the Mega and Smart Cities projects.
- ❑ Conclusion- they must be prioritised given their social and economic impact, alignment to the National Development Plan and the Provincial Growth and Development Strategy.
- ❑ The Mega and Smart Cities projects have since become the priority of the NW Government.

Nature of Mega and Smart Cities

- ❑ Typical projects worth over R1 billion – takes approx. 10-15 years to build.
- ❑ Involves multiple public and private stakeholders.
- ❑ Are transformational and catalytic in nature.
- ❑ Impact millions of people.
- ❑ Empower people in terms of short, medium and long-term jobs and job opportunities.

Human Settlement : Empowers People & Economy

Transforming Spaces

Stimulate development activity that reflects local needs and mixed housing typologies integrated settlement



Restructuring the urban landform

Smart a& Mega Cities s become nodes of residential commercial, government, and community activity



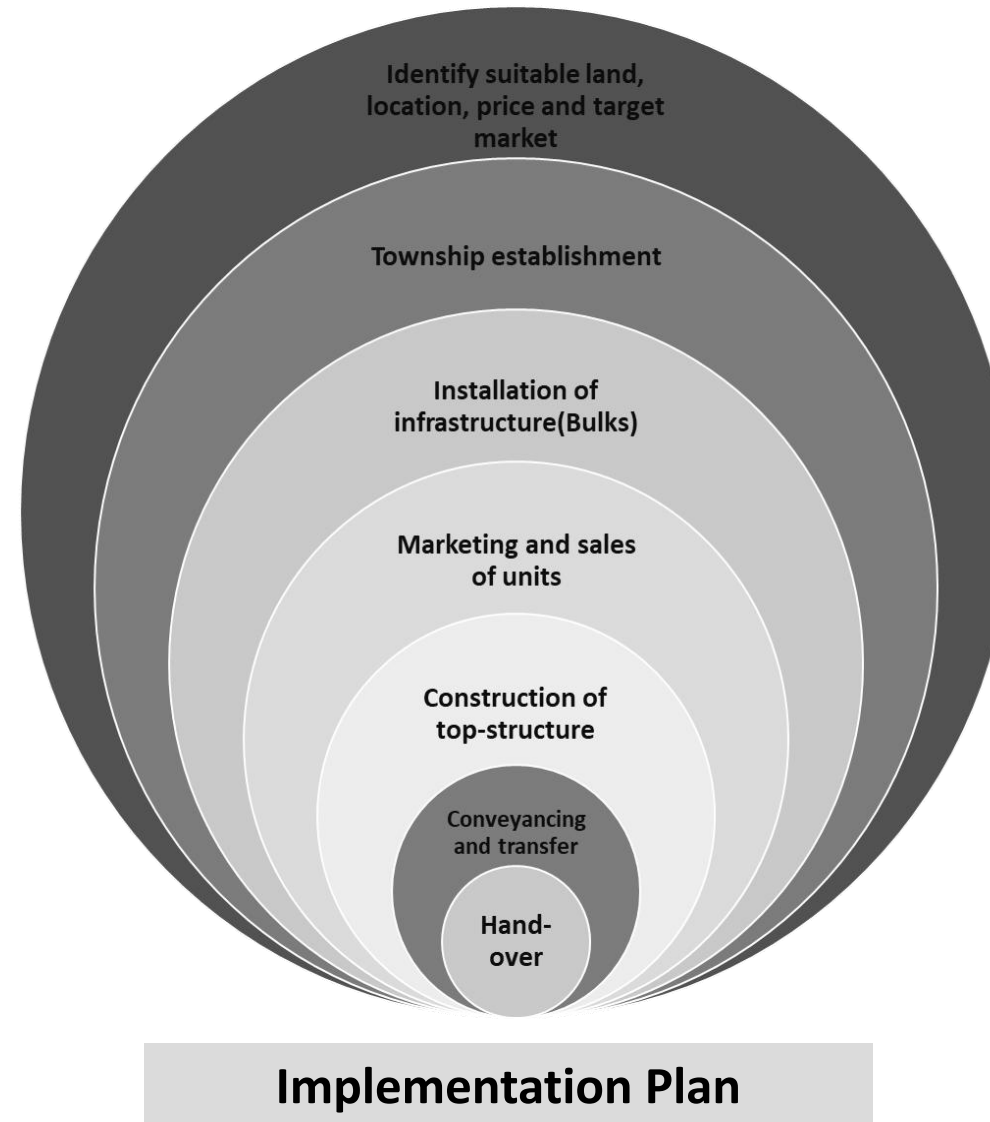
Pillar of Excellence

Improving the quality in provisioning of services and interaction with citizens



Cultivating Livelihood

Each Mega and Smart City has local context and responds to the needs of target communities



Main Goal

To optimise city functions and promote economic growth while also improving the quality of life for citizens by using smart technologies and data analysis

Bankability

- ❑ The Office of the Premier's Close Out Report – Nov 2023, concluded that the NW Mega & Smart Cities projects were bankable, commercially viable and aligned to the government's macro social and economic imperatives.

- ❑ In essence these contributes to:
 - Government's service delivery drive,
 - promotes integrated human settlements,
 - job creation,
 - investment attraction,
 - investment deployment in marginal areas and
 - empowering of youth, women and people living with disability.

Strategic Partnerships

- ❑ Infrastructure South Africa (ISA).
- ❑ Development Bank of South Africa.
- ❑ NSFAS – guarantee occupation – have the stats.
- ❑ All made independent evaluation of the projects and expressed their delight and support the projects.
- ❑ ISA and DBSA continues to assist in the finalisation of the technical bankability imperatives.
- ❑ DBSA expressed interest in funding all the bulk infrastructure.

Evaluation and Assessment

- ❑ Feasibility and Market studies were done on the projects.
- ❑ Appointed developers.
- ❑ DBSA to fund bulk infrastructure that will be owned by municipalities to generate revenue.
- ❑ Private sector to fund top structure.
- ❑ Had investor conference where pledges were made and processes are on-going to turn these into capital
- ❑ Finalise Financial and funding Models.

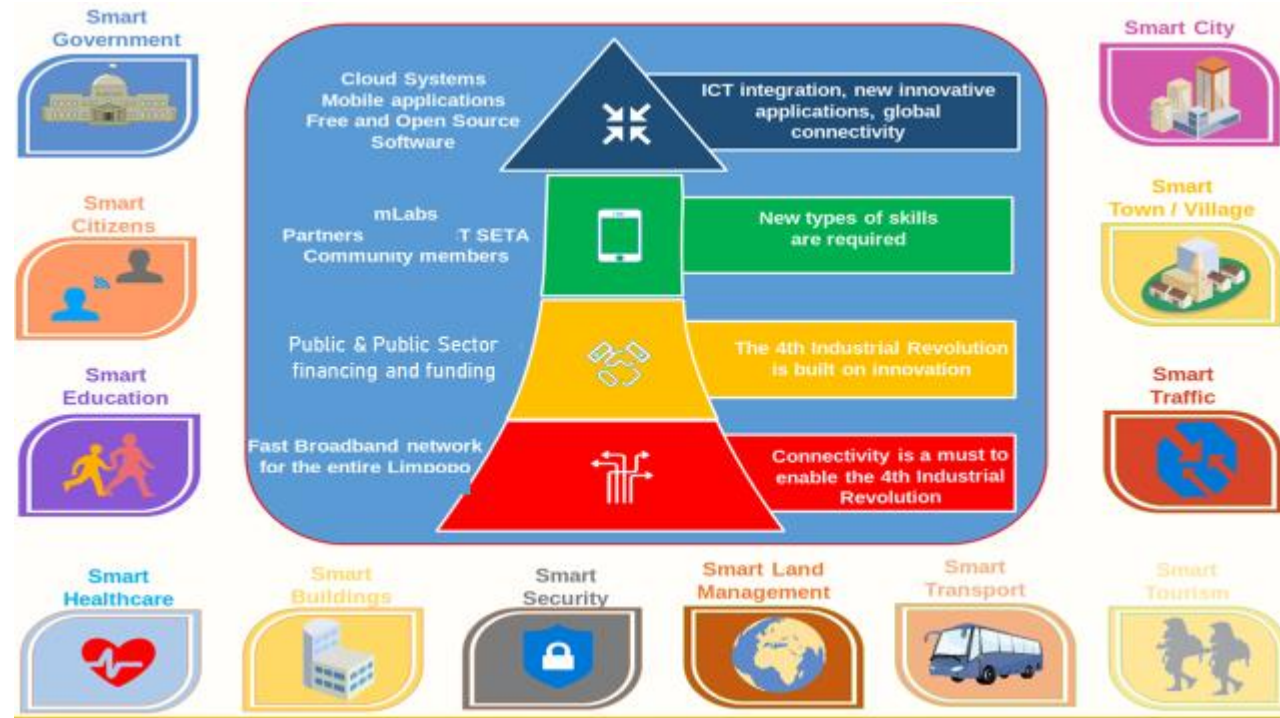
Project Location NW Province

- ☐ Mafikeng
- ☐ Potchefstroom
- ☐ Rustenburg
- ☐ Brits/Lanseria
- ☐ Mogwase
- ☐ Marikana
- ☐ Greater Taung
- ☐ Matlosana
- ☐ Ventersdorp

Co-ordination and Optimal Implementation

- ❑ NWHC to co-ordinate all engagements with municipalities and provincial institutions for synergies, information flow, quick and efficient decision making.
- ❑ The MEC for COGHSTA wrote letters to all municipalities to ensure that the work with the NWHC AAACV for seamless co-ordination and resource optimization.
- ❑ Dept. Human Settlements – incorporated the projects into their Business Plans
- ❑ NWHC signed an Implementation Protocol with the department and awaiting their final sign off.

Mega and Smart Cities Conceptual Construct



Benefits

Social Dividend: Addressing; housing demand; Decent housing for low-income earners; Hospitality and service industry; Skills training; Addressing inequality and racial divide

Economic Dividend: Job creation; Contribution towards GDP; Investment stimulation; Integration of marginal communities; Strong linkages with other sectors, manufacturing, mining etc

Project Details

District - Region	Municipality	HSS Project Number	Status	HSS Project Desc	Development this Far	Estimated Project (R' billions)	Request for Intervention
Dr Kenneth Kaunda District	JB MARKS	B23040032/1	Planning Stage	2023/24 Jb Marks Vyfhoek Ferdinand Postapark - Phase 1	Project still under planning with HDA. Design stage will be moved to NWHC. NWHC has engaged developer to start processes of planning	5,7	Consultation with the JM Marks Mayor and MM to finalise land availability agreement
Dr Kenneth Kaunda District	JB Marks	B23040076/1	Planning Stage	2023/24 JB Marks Mega Project bulk services N14 - Phase 1	The project is in two phases. One is installation of four elevated steel tanks and integrated bulk (Abeco). Elevated is under construction and the second is currently in design phase. The Integrated Bulk NWHC awaiting approval letter of Designs from JB Marks which was due on the 12 September 2024	7,2	Consultation with the JM Marks Mayor and MM to release the approval letter for the design approved.
Dr Kenneth Kaunda District	Matlosana	B23040201/1	Design Stage	2023/24 Matlosana Palmietfontein Bulk Services - Phase 1	HDA finalising township establishment. NWHC finalising design for Bulk Services. The consultants have completed Preliminary Designs attained comments on the 16 August 2024 and re submitted the on the 02 September 2024 and thus approval attained from the municipality.	0,47	No intervention required at the moment
Bojanala Platinum District	Rustenburg	B24040005/1	Planning Stage	Rustenburg Marikana Mega Project - Phase 1	Finalisation of township establishment and integrating two projects by HDA and NWHC. Meeting of the Integration of the projects taking place on the 12 September 2024 in NWHC Boardroom. Finalisation of LAA with Bapo Ba Mogale	9,7	Assistance with engagement with Bapo ba Mogale to Fasttrack finalisation of the Land Availability Agreement
Bojanala Platinum District	Rustenburg	B24040006/1	Planning Stage	Rustenburg Mega Project - Phase 1	NWHC has appointed a developer. Council Resolution for the release of the land for the Mega City attained. Incpetion Report Process underway	2,9	No intervention required at the moment

Project Details Continuous

District - Region	Municipality	HSS Project Number	Status	HSS Project Desc	Development this Far	Estimated Project (R' billions)	Request for Intervention
Bojanala Platinum District	Moses Kotane	B24040007/1	Planning Stage	Moses Kotane Mogwase Mega Project - Phase 1	NWHC has appointed a developer and still finalising LAA process. Submission of comments on the proposal done on 30th July 2024. Portfolio Committee proposal submission is 15th November 2024. Presentation to EXCO is on the 20th November 2024. Presentation to Council will happen once council has released a seating date	9,4	No intervention required at the moment
Bojanala Platinum District	Madibeng	B24040008/1	Planning Stage	Madibeng Lanseria Mega Project - Phase 1	NWHC has appointed a developer and still finalising LAA	8,8	Signing of an MOU between NW and Gauteng Premier, Development of IP between HS HODs Gauteng, NW and DG.
Dr Ruth Segomotsi Mompoti District	Greater Taung	B24040009/1	Planning Stage	Greater Taung - Taung Mega Project - Phase 1	NWHC has appointed a developer. Tribal Council granted resolution. Rural Development processes underway for attaining Power of Attorney	3,4	MEC, and CEO to meet Kgosi Motlhabane to fast-track the process of land release on the project.
Dr Kenneth Kaunda District	Matlosana	B24040010/1	Construction Stage	Matlosana Mega Project - Phase 1	Finalisation of Land Purchase and Signing Off of IP. All planning matters completed	7,1	Require additional funding for the purchase of the land
Bojanala Platinum District	Moretele	B24040011/1	Planning Stage	Moretele Mega Project - Phase 1	NWHC has appointed a developer and still finalising LAA	11,7	No intervention required at the moment
Ngaka Modiri Molema District	Mafikeng	TBA	Planning/Design Stage	TBA	PoA attained from NWPW&R. The project is in two phases which is construction of student accommodation and mega city.	13	Additional Funding for construction of Bulk Services

Recommendations

- Mega and Smart Cities Projects be factored in the IDP's processes and plans for a seamless coordination and resource optimisation.

THANK YOU



WE BUILD SMART AND MEGA CITIES



www.nwhc.co.za